

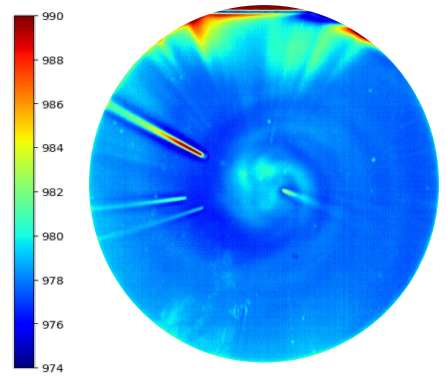


# VESOLVE<sup>®</sup> PRO

## Hyperspectral Vision Software

### TARGETED, USER-CENTERED, AND AI-DRIVEN

**VEsolve<sup>®</sup> Pro** is the powerful all-in-one software suite designed for DIVE technology, comprising acquisition, screening and exploration of Hyperspectral Vision data (“hypercubes”). Easy handling of sophisticated math utilizing commonly known concepts empower users to commence productive work immediately.



Layer thickness in nm as provided by VESolve<sup>®</sup> Pro

**VEsolve<sup>®</sup> Pro** is designed for DIVE-technology and sold with DIVE-hardware.

- **VEsolve<sup>®</sup> Pro** controls **VEpioneer<sup>®</sup>** data capturing – providing optimised presets per sample and ensuring highest data quality through live correction of all non-sample influences.
- **VEsolve<sup>®</sup> Pro** handles high-dimensional hypercubes as easy as conventional images and visualises the insights within milliseconds after the inspection for the users.
- Teach your own sample specific AI models by simply “painting” or apply existing model by simply one click without being a data specialist.

### SOFTWARE FEATURES

|  |   |
|--|---|
| <b>Data acquisition</b>                      | Live frame, white and dark reference, pixel-binning, exposure time, averaging (and more), widely assisted |
| <b>Data screening and Data pre-treatment</b> | Hypercube editing (resampling, crop, stitching), Spectral processing (and more)                           |
| <b>Data exploration</b>                      | Machine learning algorithms   |
| <b>Unsupervised</b>                          | PCA, k-means  |
| <b>Classification</b>                        | LDA, random forest  |
| <b>Regression</b>                            | PCR, PLS  |
| <b>Data import</b>                           | ENVI (bsq, bil, bip), .jpg.hsi, .csv, .hdf  |
| <b>Data export</b>                           | ENVI, .tiff, .jpg, .png, .csv, .xml   |